



P

VI SENCo Newsletter.

SPRING 2021

CONTENTS:

Page 1: Thank you

Page 2: Virtual Training

Page 3: Early years consultation forums

Page 4: Royal Greenwich Local Offer

Page 5: COVID 19- Coronavirus Info for Families with Children with SEND | Greenwich Community Directory

Page 6: Support for vulnerable people who cannot leave their home

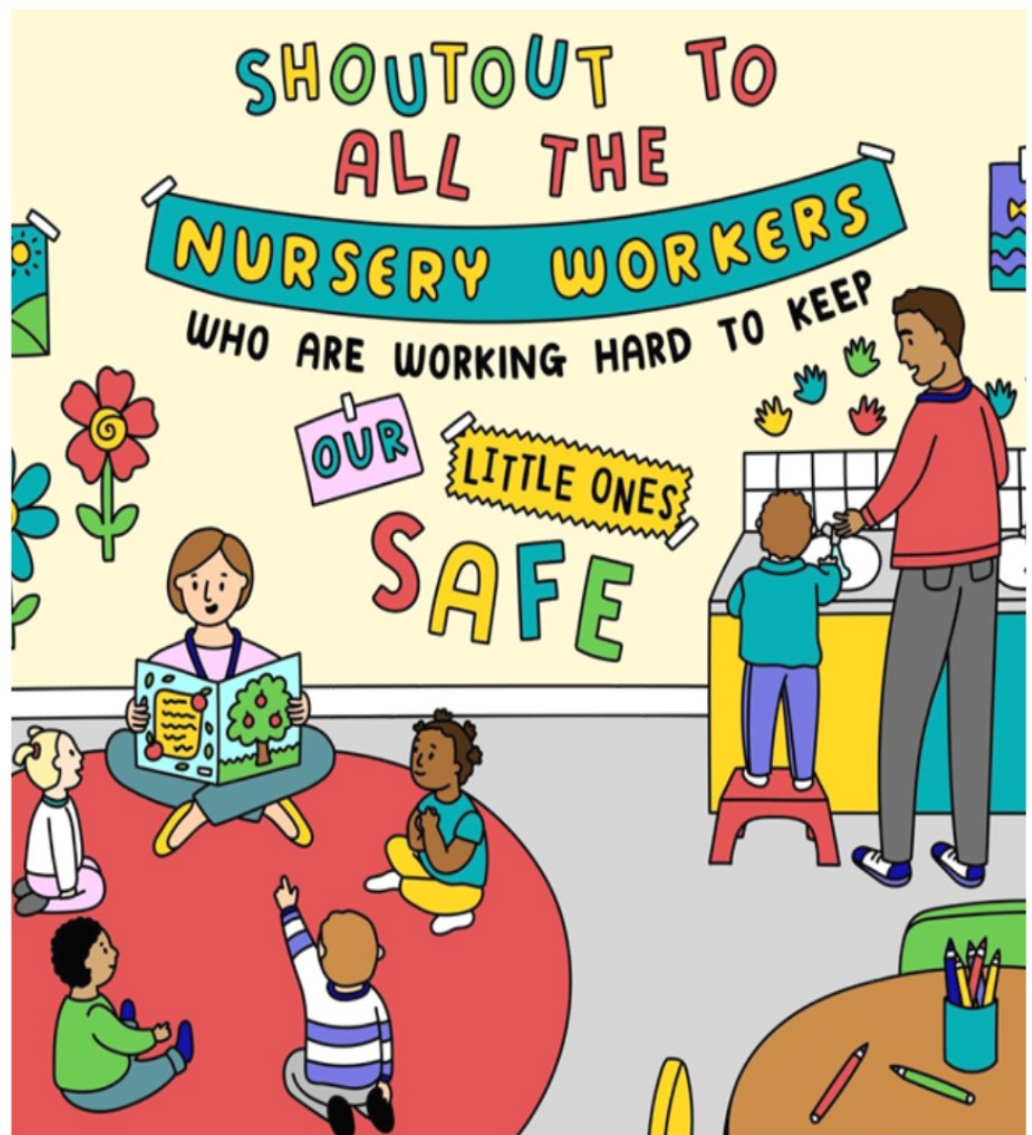
Page 7: New/ Updated 'Record of SEN plus Medical Needs' and Royal Greenwich Parent Participation Forum

Page 8: Speech Therapy, Physiotherapy and Occupational Therapy reminder and Qwell - New mental health service for our residents

Page 9: Coffee Morning and Free open space available for families

Page 10: Willow Dene School resources and Comic Relief

Managers, SENCo's and practitioners,
Just to start with, a huge thank you for all your hard work with children and families during this most difficult of times.



In response to the Coronavirus situation, The Early Years Inclusion Team quickly updated our training offer and moved many of our training packages onto a virtual training platform.

I'm very pleased to say we have now trained over **515** practitioners virtually since May 2020.

See table below regarding current virtual training offer.....

Course title	Available virtually
Introduction to SEND (Special Educational Needs & Disability).	✓
Legislation and Early Identification	✓
Planning for Progress for children with SEND (PLP)	✓
SEND (Special Educational Needs & Disability) Foundation Certificate.	✓ <i>Only for Practitioners taking on the SENCo role</i>
Early Years Consultation Forums- <i>dates have already been arranged</i>	✓
Working with parents/voice of the child	✓
Multi –agency working and TACs	✓
Disability Awareness	✓
Completing Profiles and EHC request	✓
Developing a Profile Workshop	✓
Talking Mats	✓
SEN Inclusion Fund/ Disability Awareness	✓
Local Offer part 1	✓
SEN Toolkit	✓

If you are interested in accessing virtual training, please click on the following link:

[Early Years Inclusion Team - additional resources and information | Greenwich Community Directory](#) and click on the drop down for EYIT training offer for PVI settings and SENCo's



**EARLY YEARS CONSULTATION FORUMS ARE
BEING HELD VIA MICROSOFT TEAMS**

Due to the Covid 19 situation these forums have transferred to an online virtual meet up via Microsoft Team.

Microsoft Teams is free; you just download the app and click on the invitation link that will be sent to you via your link Area SENCo.

At the Early Years Consultation Forums, we aim to create a supportive, safe and confidential space in which to explore issues and concerns in detail. The Forums are non-judgemental and allow members to acknowledge strengths and difficulties as well as developing knowledge and skills.

Through active listening, suggesting what might be going on and problem clarification; members share thinking and ideas to generate possible solutions.

Forums currently take place in five areas of Royal Greenwich (see below).

South Area –Monday from 9.15am – 11.15am - 29th March & 17th May

West Area

East Area

Central A Area

Central B Area - Wednesdays - 9.30am-11.30am - 17th March 19th May
23rd June

Royal Greenwich Local Offer



We have been working hard to update our Early Years Inclusion Team (EYIT) page on this website.

Alongside information regarding our team (who we are and what we offer), you will now be able access to additional resources e.g. Greenwich referral forms/ pathway information, formats, symbols, recommended strategies, and activities.

Please log on and have look, see link below for your reference.

[Early Years Inclusion Team - Children's Services | Greenwich Community Directory](#)



[Early Years Inclusion Team - Children's Services | Greenwich Community Directory](#)

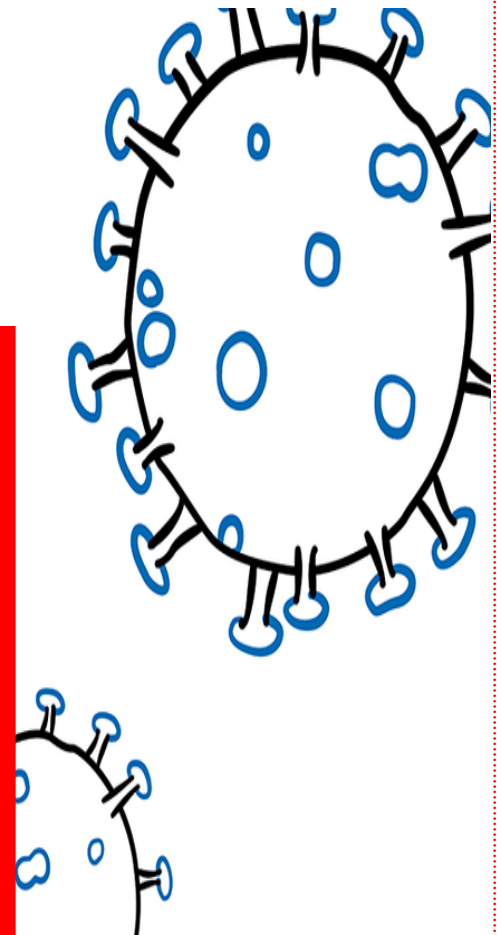
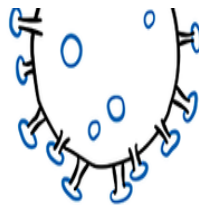
Your child can receive support from the Early Years Inclusion Team if they have an identified or emerging complex special educational need/ disability and are a Greenwich resident aged 2-5yrs who attends an early education or care setting that is in the Private, Voluntary or Independent (PVI) sector (i.e. not a local authority school), this includes child-minders.

greenwichcommunitydirectory.org.uk

[COVID 19- Coronavirus Info for Families with Children with SEND | Greenwich Community Directory](#)

Food and Supplies for families in need from Roots4Life. What's on at the National Theatre? Food and PPE equipment delivered by Well Child. Mind fullness Audio sessions by Act Mindfully.. Free Book for Children on COVID-19. Greenwich Community Hub if you are vulnerable and self-isolating. What is Corona Virus factsheet for children by Public Health England. COVID-19 Awareness Activities

greenwichcommunitydirectory.org.uk



Also, on the Royal Greenwich Local Offer:

COVID 19-Coronavirus Info for families of children with SEND

<https://greenwichcommunitydirectory.org.uk/kb5/greenwich/directory/advice.page?id=hIGtMAaNLSo>



Support for vulnerable people who cannot leave their home

The **Royal Greenwich Community Hub** has been supporting people since the beginning of the pandemic, and this service is still available to support you. The Royal Greenwich Community Hub links thousands of volunteers with opportunities to help people who are most in need of support.



If you cannot go out and do not have any family, friends or neighbours around to talk to or help you, then contact the Royal Greenwich Community Hub. We're here for you, and can support you with:

- food
- keeping your mind and body healthy
- money issues
- housing
- employment, volunteering and training
- advice about staying warm and well in winter
- social activities

The Community Hub from Royal Greenwich is here if you need help

We are open seven days a week, 8.30am to 6pm. Contact us on:

☎ 0800 470 4831

💻 covid19support@royalgreenwich.gov.uk



New/ Updated 'Record of SEN plus Medical Needs' document

We have re-designed our template for recording information on your SEN Register to include a record of Medical Needs.

This is for you to use to collect information regarding children you have within your setting (see attached).

This has been designed primarily to allow for settings to capture those children that may have some 'medical needs' such as glue ear... for example that are known to outside agencies such as the Sensory Service.

It has been designed so the record is broken into two sections; SEN record and medical needs only (which is a sub list for children with medical needs -which may not typically impact on the child's learning needs).

There is no reason why other medical needs cannot be added such as asthma, allergies, sickle cell etc if settings want... this will ensure that managers/ SENCo and staff are extra vigilante that there may be an additional impact on the child's learning.

Royal Greenwich Parent Participation Forum

Are you a parent/carer of a person with SEND and live in the Royal Borough of Greenwich?

We are planning topics and meetings, that we hope you will find useful.

If there are any areas that you would like to know more about, as we would like to know.

What is working well?

What needs to get better?

What is missing?

Are there areas/topics you would like to know more about?

Is there any workshops / training you would like to receive?

Come and meet with other parents who have a child/young person with SEND 0-25 to share ideas on how we, as a forum, could develop our role to provide you with more information and improve our feedback to you, Health Services and the Council.

Please make your Parents aware of this forum – see attached poster.



Just a reminder.....

Speech Therapy, Physiotherapy and Occupational Therapy are continuing to offer support and advice to families regarding their children via phone calls and online media.

See attached poster for you to display and inform parents of how they can contact these services

**Qwell - New mental health service for our residents**

PAGE 8

The Covid-19 pandemic and months of restrictions have had an impact on everybody's mental wellbeing. We have launched an innovative new service to support south east London residents in response to this.

Qwell is a free, anonymous online counselling and emotional wellbeing service for adults aged over 26 years of age. Residents can now receive counselling sessions from qualified counsellors via an online chat-based platform. Chats can either be accessed through a drop-in service or pre-booked sessions from any connected device. The site is open 24 hours a day; one-to-one counselling sessions with a qualified counsellor are available from 12-noon until 10pm on weekdays, and from 6pm until 10pm on weekends. Those using Qwell are also able to take advantage of a range of self-help tools from reading and contributing to articles, peer to peer support via online discussion boards as well as journals and goal trackers.

Please promote the service through your organisations. With staff and publicly.

Click on the following link for more information: <https://www.qwell.io/>

Coffee Morning

11th Mar @ 10.00am – 11.00am

(see attached flyer)

Calling **all staff** supporting our pupils with **Down Syndrome!**

Please join me for an **informal**, virtual coffee morning to **discuss effective strategies** and **ongoing support** for our children with Down Syndrome.

This term's theme will be on:

'strategies to support attention and focus'

If you would like to **join** this coffee morning – please **contact me via email:**

claire.large@royalgreenwich.gov.uk

I look forward to welcoming as many of you as possible.

Free open space available for families

COVID-secure site available for free in New Eltham to families of children with additional needs living in the Royal Borough of Greenwich.

Please see flyer attached for Free family outdoor play space available during lockdown for **ALL** families in Greenwich with a child or young person with a special educational need and/ or disability.

Please circulate to families within your networks. Details on how to book are on the flyer.

Willow Dene School Resources

Willow Dene school have uploaded lots of activity ideas, including videos onto their website. Have a look for some great ideas to support children with SEN.

<https://www.willowdene.greenwich.sch.uk/node/384>



**COMIC
RELIEF**

HELLO NURSERIES AND EARLY YEARS SETTINGS

Red Nose Day is back on Friday 19th March and this year it's never felt more important to have some fun and raise money to support people living incredibly tough lives. We need the power of funny to turn laughs into lasting change. See link below if interested:

<https://www.comicrelief.com/rednoseday/schools/earlyyears/>