

ACE Network Participation Easy Read Report

Participation with Young People with
Special Educational Needs and
Disabilities in The Royal Borough of
Greenwich

Report Authors:

Lisa Sheaf

June Biggs

Participation Officers

2023-2024



Hello and
welcome

From lots of Children and Young People
across the Royal Borough of Greenwich



2.

Easy Read Annual Report 2023-2024



- This report is for you if you are part of, or interested in ACE.
- It shows what ACE did in 2023-2024.



- We give our views to RBG on services that affect children & young people with SEND.
- We say:
“We are the experts in our own lives.”



- RBG promise to listen to ACE.
- This means that we help to shape or change services in RBG.

3.

What is in this report?

Pages:	Title:
1, 2, 3	Front cover, Intro, Contents pages
4	Words to understand
5 & 6	What is ACE?
7	Who has taken part?
8	Showing our work
9 & 10	What went well?
11	What did people say about our work?
12	Things to do better
13	The numbers
14 & 15	What did we do?
16	Giving our views nationally
17	Celebrations
18	What is next?
19	Contact us

3.

Words used in this report?

Word:	What does it mean?
ACE	Action, Change, Equality (Our network of schools that have participation groups in them)
RBG	The Royal Borough of Greenwich.
We	ACE members.
SEND	Special Educational Needs & Disabilities.
Easy Read	Using simple words & pictures to help us to understand what we are reading.
Local Offer	Info about services that are in Greenwich and where to find them.
C&YP	Children and young people.
Our views	Saying what we think.

We have put some of the highlights and good comments that people have said about ACE in green for you to enjoy!

5.

What is ACE?



- ACE stands for Action, Change, Equality.
- We chose the name ourselves.



- It is how we give our views in Greenwich about things that are important to C&YP with SEND.



- We give our views in many ways.
- We, and staff that know us well, choose the best ways to give our views.



- We have 8 ACE groups this year in schools and a college across Greenwich.



- We meet in our schools to give our views on things that matter to us.
- We usually meet once a month.



- Also, questionnaires and surveys are sometimes sent direct to schools.

We got 399 extra views this way.



- Smaller groups are sometimes chosen to give their views on a topic that is important to just them.

7. Who has taken part this year?



- About 60 of us, aged 7-19 years, have regularly taken part this year.

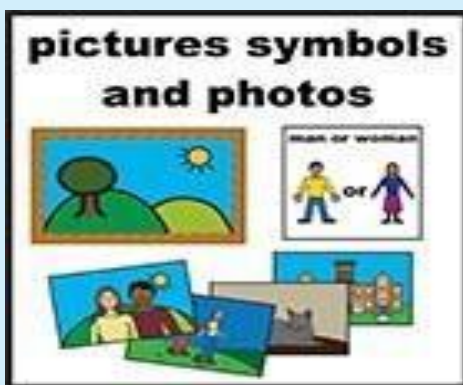


- We are all children & young people with SEND.



- We all go to Royal Borough of Greenwich schools or colleges.

8. Showing our work:



- We take photos and videos to show the activities and the work we have done.



- We like to record our views using drawing, artwork, IT and media.



- We show our work on our ACE Local Offer page.
- We have made our own ACE video. Click here to see it:

[Action Change Equality \(ACE\) | Greenwich Community Directory](#)

9. What went well this year?



- We gave our views for the SEND Strategy.
- We wrote some of the text.
- Our artwork and photographs were used.
- RBG said:

“ It feels like it belongs to them.”



- It is important we get feedback to know we have been listened to.



- We support the council and schools to use “Easy Read.”
- We like to use this too.



- We gave our views on important national and local topics.



- We got quicker and better feedback from RBG telling us how we had made change happen.



- We won a Do The Right Thing Award again!
- A parent said:
“A lovely event. We are so proud.”

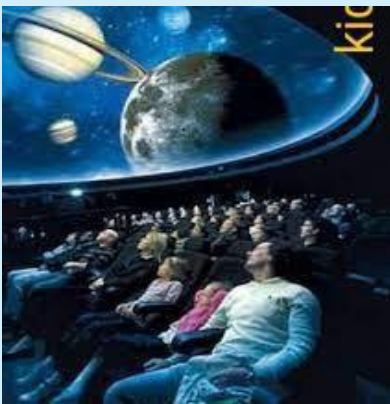


- We feel listened to.
- We have fun!

11. What people said about our work:



- We helped choose senior managers for 3 jobs.
- The interview panel said:
“ We were very impressed.”



- We visited the Royal Observatory to give them ideas to make it better.
- They said:
“Your feedback has been really useful.”

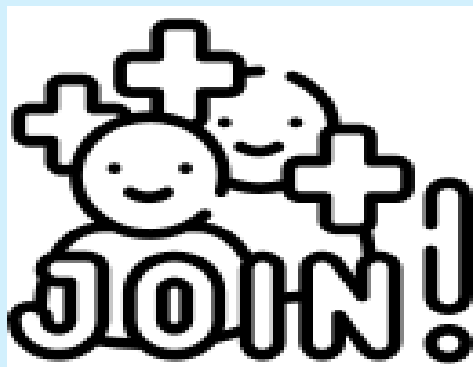


- We gave advice to the Moving to Adulthood team.
- They said:
“You were absolutely fantastic!”

12, What needs to be better next year?



- Remember to always tell us, as quickly as possible, when we have helped change to happen.



- Find a way that works for us to join in with Greenwich Young People's Council.



- Make sure that C&YP with other needs get a chance to give their views.

13. The numbers:



- This year we gave 464 views.
- Last year we gave 308 views.
- ***This is 51% more!***



- We talked about 20 different topics.
- Last year we did 16.
- ***This is 25% more!***



- On average 23 of us gave our views on each topic.

14-15. What we did this year:



- Almost all of us gave views on what is important to us in Greenwich.

“Really interesting.”



- Over 300 other C&YP with SEND also gave their views.



- 24 of us gave our views on how to improve 3 pages of the Local Offer.
- They were pages that were important to C&YP with SEND.

14-15. What we did this year:



- We helped to choose the new Head of Sensory Service.
- The person we chose got the job!



- 32 of us helped to choose the new Strategic Lead for SEND.
- The interview panel said:
“ It really helped decide who was best.”



- Some of us had visits from managers in RBG
- They asked us questions.
- We said:
“ We felt important.”

16. We had the chance to have our voice heard nationally too:

**The
Children's
Society**

- 10 of us worked with The Childrens Society, #Look Closer.
- They said:

“You all gave brilliant ideas.”

**YOUR
CHOICE**

- 33 of us gave our views to London's "Your Choice".

They said:

“Very helpful feedback.”

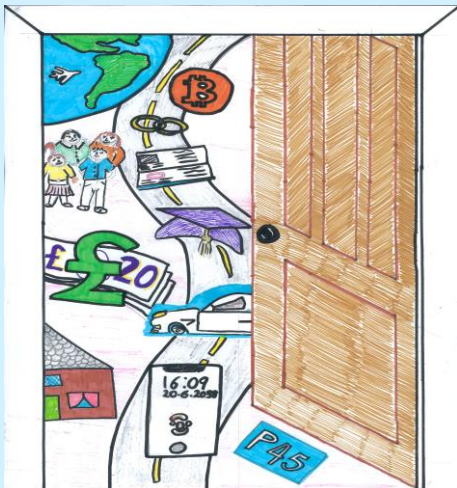


- We want more chances to have our voices heard nationally.

17. We celebrated too!



- 37 of us planned our ACE celebration disco & art display.
- 30 of us attended. We said:
“We had a great time and met new friends!”



- We showed off our amazing artwork.
- It was great to see all the different art styles.

“The art looked cool and interesting.”



- We will add the artwork to our video when we update it this year!

18. What is next?



- More groups will be joining ACE so that C&YP with other support needs can give their views.



- Make better links with other young people groups via our SEND Young Advisor.
- We will support him, and he will support us.



- We want to join in more national consultations.

19. How to contact ACE:



- You can find out more about ACE on our Local Offer page or by emailing:



- Email ACE:
youth-voice@royalgreenwich.gov.uk



- Visit our Local Offer page

[Action Change Equality
\(ACE\) | Greenwich Community
Directory](#)