

Information about the area SEND inspection of your local area: for parents and carers



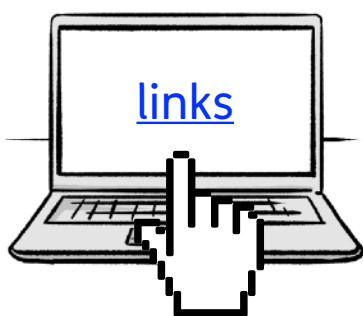
**Easy
Read**

Contents

Introduction.....	3
Why do we look at services?	5
What happens during an inspection?	7
What happens after an inspection?.....	10
More information	12



In this Easy Read document, hard words are in **bold**. We explain what these words mean in the sentence after we have used them.



Some words are blue and underlined.

These are links that will go to another website which has more information.

Introduction



This information is from **Ofsted**.
Ofsted checks the quality of education services in England, like schools and nurseries. We also look at children's social care.



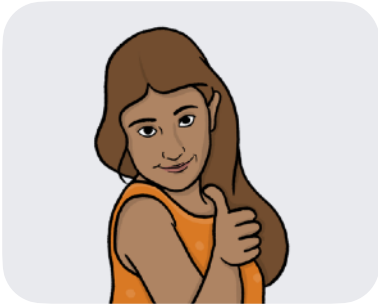
We also work with the **Care Quality Commission (CQC)**.
CQC checks the quality of health and social care services in England, like hospitals and care homes.



Together we look at services in local areas that support children and young people with **SEND**.
This is called an area SEND inspection.



SEND stands for **S**pecial **E**ducational **N**eeds and **D**isabilities. Children and young people with SEND aged 0 to 25 need some extra support to learn and grow.

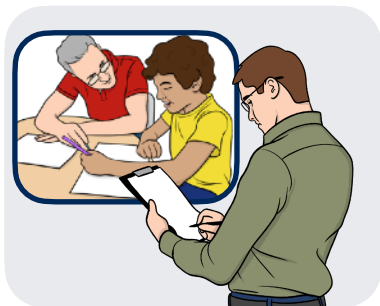


We want to make sure local services are supporting children and young people with SEND to learn and grow.



This information will tell you what happens when we look at services in local areas.

Why do we look at services?



When we look at services that support children and young people with SEND in a local area, we call it an area SEND inspection.



Area SEND inspections also include looking at services for children and young people who live in the local area, but go to school or get care in other local areas.



We look at different kinds of services that support children and young people with SEND. These services include:



- Education services, like schools.



- Health services.



- Care services.



We do inspections so that we can see what is working well and what could be better.



This will help make services for children and young people with SEND better.

What happens during an inspection?



Inspectors from Ofsted and CQC will visit your local area.

Inspectors are people who will do the inspection.



Inspectors will talk about local services with children and young people with SEND, and their families.

When we do an inspection we look at:



- How well the local area provides services for children and young people with SEND.



- How well local services work together to make life better for children and young people with SEND.

We also look at:



- Information about services for children and young people with SEND in the local area.



- Information we collect by visiting services for children and young people with SEND.

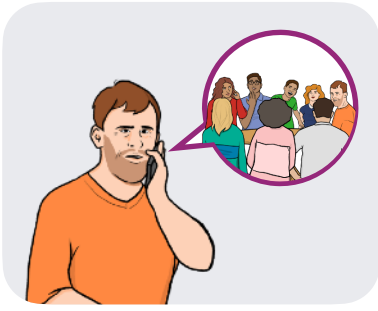
How you can tell us what you think



You can tell us what you think about the services for children and young people with SEND in your local area. You can do this by:



- Answering some questions in our online survey about the kind of help and support you and your child get. You can tell us what is working well and what could be better.



- Taking part in meetings with us – you can do this by contacting your local **parent carer forum (PCF)**.



A **PCF** is a group of parents who have children with SEND. They meet to support each other and share information about how to best help children and young people with SEND.



- Taking part in meetings with us and telling us about the kind of help and support you get.

What happens after an inspection?



We will write a report about what we have found out from the inspection.

The report will include:



- What services are doing well.



- What services need to do to improve, and how they can do this.



If we think services in your area are not doing enough, we will ask the local area to write a plan about what they are going to do better.



- When we will next visit.



We won't write anything in our inspection report that tells people who you are.

More information



You can complain about a service in your local area.

To do this, your local council will have some steps you can follow.



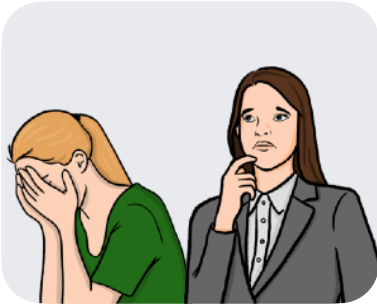
If you are worried about a child under the age of 18 or think they are in danger, you can:



- Contact your local council's children's social care team – you can find out how to do this at www.gov.uk/report-child-abuse-to-local-council



- Call the National Society for the Prevention of Cruelty to Children (NSPCC) on 0808 800 5000.



If you are worried about a young adult over the age of 18 or think they are in danger, you can:



- Call your local council and ask to speak to the adult safeguarding team.



You can look at our website here:
<https://www.gov.uk/government/organisations/ofsted>



If you need more information please contact us by email:
area.send@ofsted.gov.uk