

ACE Network Participation Easy Read Report

Participation with Young People with
Special Educational Needs and
Disabilities in The Royal Borough of
Greenwich

Report Authors:

Lisa Sheaf

June Biggs

Participation Officers

2024-2025



Hello and welcome

From lots of Children and Young People
across the Royal Borough of Greenwich



2.

Easy Read

Annual Report

2024-2025



- This report is for you if you are part of or interested in ACE.
- It shows what ACE did in 2024-2025.



- We give our views to RBG on services that affect children & young people with SEND.
- We say:
“We are the experts in our own lives.”



- RBG promise to listen to ACE.
- This means that we help to shape or change services in RBG.

3.

What is in this report?

Pages:	Title:
1, 2, 3	Front cover, Intro, Contents pages
4	Words to understand
5 & 6	What is ACE?
7	Who has taken part?
8	Showing our work
9 & 10	What went well?
11	What did people say about our work?
12	Things to do better
13	The numbers
14 & 15	What did we do?
16	Giving our views nationally
17	Celebrations
18	What is next?
19	Contact us

3.

Words used in this report?

Word:	What does it mean?
ACE	Action, Change, Equality (Our network of schools that have participation groups in them)
RBG	The Royal Borough of Greenwich.
We	ACE members.
SEND	Special Educational Needs & Disabilities.
Easy Read	Using simple words & pictures to help us to understand what we are reading.
Local Offer	Info about services that are in Greenwich and where to find them.
C&YP	Children and young people.
Our views	Saying what we think.

We have put some of the highlights and good comments that people have said about ACE in green for you to enjoy!

5.

What is ACE?



- ACE stands for Action, Change, Equality.
- We chose the name ourselves.



- It is how we give our views in Greenwich about things that are important to C&YP with SEND.



- We give our views in many ways.
- We, and staff that know us well, choose the best ways to give our views.

13

- We have 13 ACE groups this year in schools and a college across Greenwich.



- We meet in our schools to give our views on things that matter to us.
- We usually meet once a month.



- Also, questionnaires and surveys are sometimes sent direct to schools who are not regularly part of ACE.



- Smaller groups are sometimes chosen to give their views on a topic that is important to just them.

7. Who has taken part this year?



- About 60 of us, aged 7-19 years, have regularly taken part this year. We have given **229** views.



- We are all children & young people with SEND.



- We all go to Royal Borough of Greenwich schools or colleges.

8. Showing our work:



- We take photos and videos to show the activities and the work we have done.



- We like to record our views using drawing, artwork, IT and media.



- We show our work on our ACE Local Offer page. This is being updated.
- We will be updating our ACE video soon.

9. What went well this year?



- We designed the hoarding for a provision being built on Bexley Road.
- We drew pictures relating to nature. The pictures were entered into a competition.



- It is important we get feedback to know we have been listened to.



- We support the council and schools to use "Easy Read."
- We like to use this too.



- We gave our views on important local topics.



- We got quicker and better feedback from RBG telling us how we had made change happen.



- We have been nominated for a Do the right thing award again this year.



- We feel listened to.
- We have fun!

11. What people said about our work:



- We helped choose a new Head of SEND Outreach Services manager.
- The interview panel said:

“We were very impressed.”



- The winners from the art competition were given book vouchers RBG said:

“Your feedback has been really useful.”



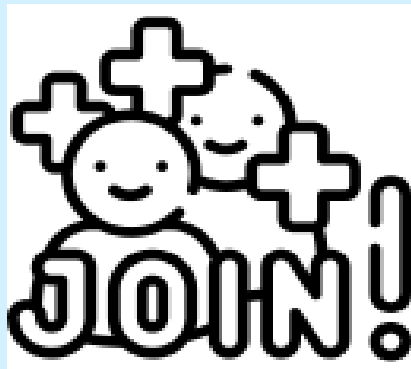
- We gave advice on how to improve the Community Directory. They said:

“We will make the content easier and more interesting!”

12, What needs to be better next year?



- Remember to always tell us, as quickly as possible, when we have helped change to happen.



- Find a way that works for us to join in with Greenwich Young People's Council.



- Make sure that C&YP with other needs get a chance to give their views more often.

13. The numbers:



- This year we gave 229 views.



- We talked about 13 different topics.



- On average 45 of us gave our views on each topic.

14-15. What else we did this year:



- .We were asked to design mocktails for a disco for Children and young people over 12 with SEND.
- *“This was brilliant and finally felt included.”*



- We attended the party. We had a DJ and glowsticks. A parent said:
- *“Thank you for putting on such a great event. My daughter enjoyed being with others like her.”*



- We helped to recruit a new SEND Outreach manager.
- *“The ACE groups agreed with the panels in their decisions”*

14-15. More of what we did this year:



- 41 of us took part in the short break's consultation.
- *“ACE’s involvement directly influenced the outcome.”*



- We gave feedback on the activities that are already being provided.



- 46 secondary and post 16 young people took part in a questionnaire about our experiences of transition to secondary school.

16. We had the chance to have our voice heard externally too:

**The
Children's
Society**

- Some of us worked with The Children's Society, along with British transport Police on child exploitation.
- *"Your input has meant that the leaflet is both accessible & engaging."*



- The Royal Observatory visited a special school. One secondary and one primary visited the Royal Observatory.
- They were rewarded with book tokens for taking part.



- We want more chances to have our voices heard nationally.

18. What is next?



- More groups will be joining ACE so that C&YP with other support needs can give their views.



- Make better links with other young people groups via our SEND Young Advisor.
- We will support him, and he will support us.



- We want to join in more national consultations.

19. How to contact ACE:



- You can find out more about ACE on our Local Offer page or by emailing:



- Email ACE:
youth-voice@royalgreenwich.gov.uk



- We worked with RBG to give our views on how they can make the ACE page look better...coming soon.